

VERITAS CATRO III

GENERAL DESCRIPTION

A Damen 1605 Fast Crew Supplier with pedigree in north Caspian projects. With sailing speeds of 29 knots, suitable for personnel movements and medevac response standby roles.



PARTICULARS

Type	Crew Tender
Flag	Kazakhstan
Port of Registry	Aktau
Registration No.	28762Q
Classification Society	Kazakhstan Register of Shipping (KZR)
Navigation/ Class Notation	I HULL MACH Sea Area 2 Hs > 2.5m not to exceed more than 10% of the year.
MMSI	436000319
Call Sign	UNGU
Place of Build	Damen Shipyards, Singapore Yard No. 180/532298

PRINCIPLE PARAMETERS

L.O.A	16.48m
Height	7.80m (from keel to top of mast)
Breadth	5.40m
Depth	1.85m
Minimum Draft	0.86m aft/0.59m fore
Working Load Draft	0.95m aft/0.76m fore
Displacement	24.5 tons
Deck:	
- Area	6m ²
- Strength	3t/m ²
Payload	2 tons
Gross Registered Tons	23 grt
Net Tons	9 nrt

PERFORMANCE

Max Speed	29 knots
Cruising Speed	20 knots
Fuel Consumption	2x113.2ltr/hr (1,800rpm)
Endurance	10 hours (fuel)

CAPACITIES

Fuel	2.0m ³
Water	0.25m ³
Sewage	0.18m ³
Seats	29

MACHINERY

Main Engines	2 x Caterpillar C18TA B 2 x 500kW
Propulsion	Rolls Royce Waterjets
Rudders	2 waterjets
Generator	1 x Caterpillar C1 5NA, 11kW

LIFESAVING EQUIPMENT

Life Raft	RFD 2 x 16 persons
LSA	Full Complement

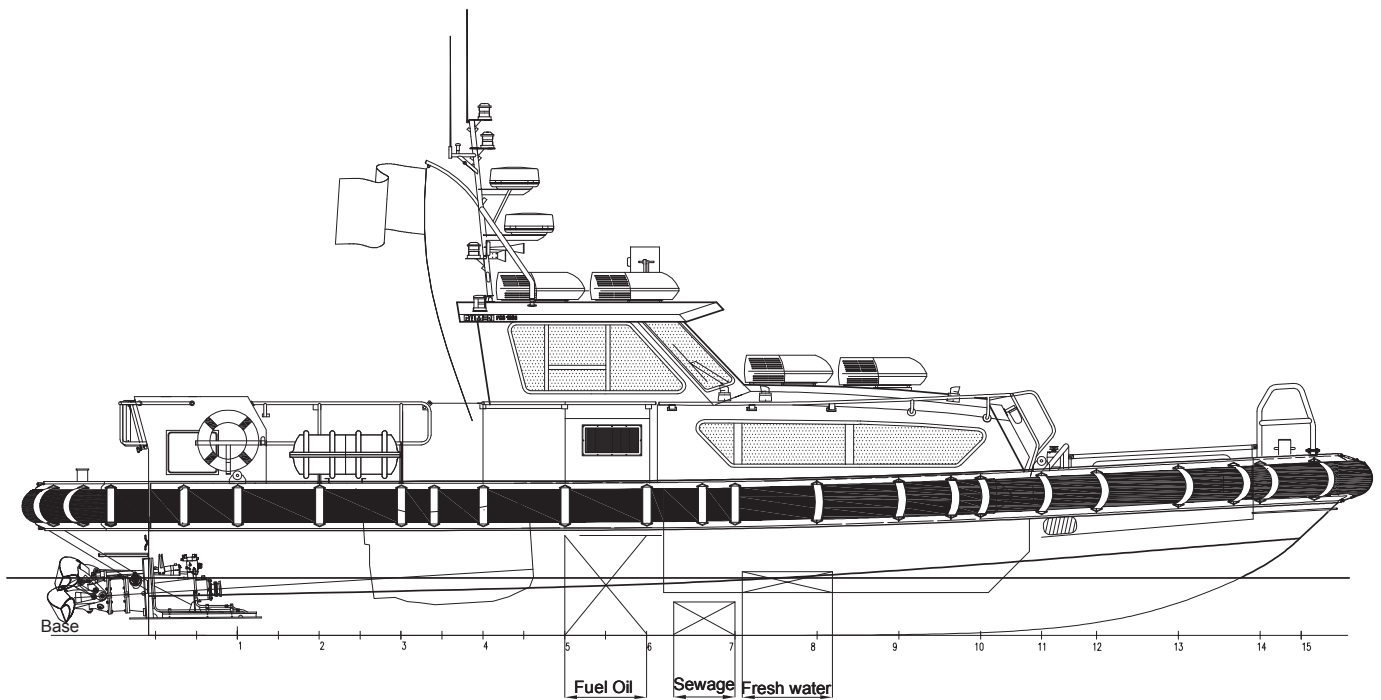
ANCILLARY EQUIPMENT

Anchoring:	
- Anchors	1 x Hand anchor, 15kg

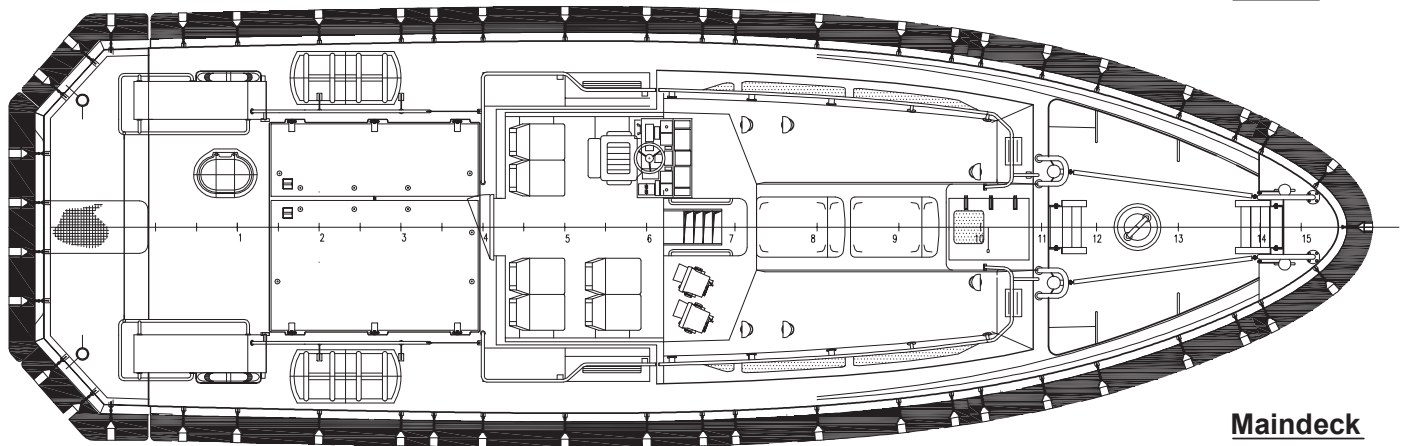
NAUTICAL AND COMMUNICATION

GMDSS	A1
Radar	Furuno FR 1835
Magnetic Compass	1
GPS Receiver	Furuno GP 32
Echo Sounder	Furuno
Navtex Receiver	Furuno NX-700
VHF Radios	Furuno FM-8900S
Satcom	None

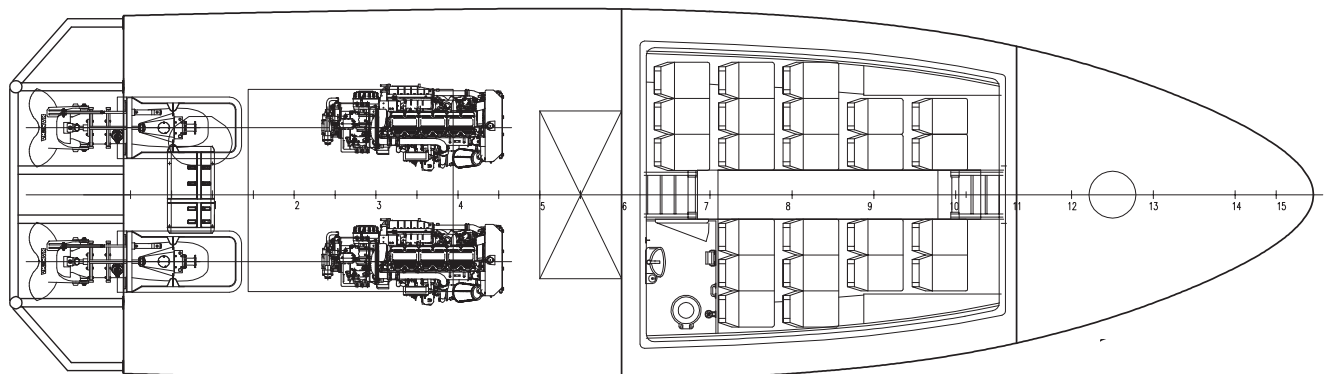
GENERAL PLAN



Profile



Maindeck



Below Maindeck